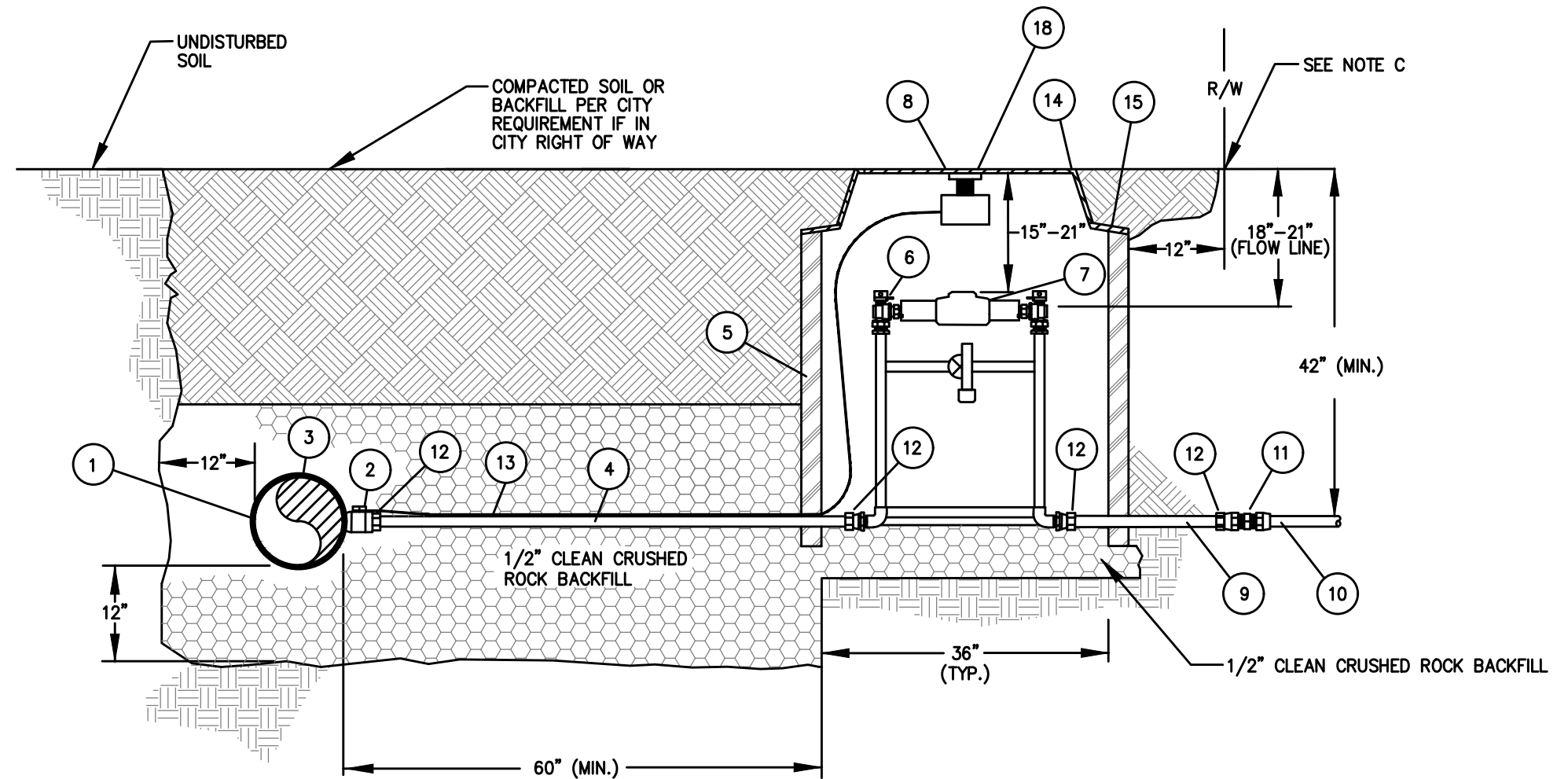
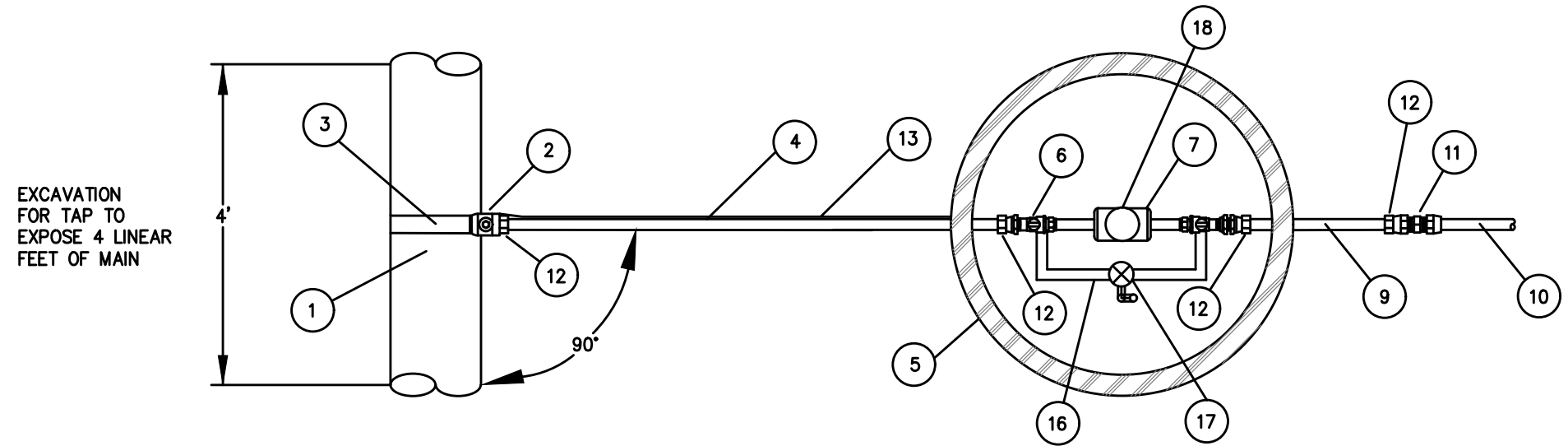


LEGEND	
NO.	DESCRIPTION
1	WATER MAIN
2	CORPORATION STOP
3	SERVICE SADDLE
4	DISTRICT'S SERVICE CONNECTION SHALL BE TYPE K SOFT COPPER OR DR9 CTS HDPE (BLUE)
5	36" PLASTIC METER PIT
6	METER SETTER
7	WATER METER WITH TRPL
8	COMPOSITE OR POLYMER COVER
9	DR9 CTS HDPE (BLUE)
10	APPLICANT'S SERVICE LINE
11	TRANSITION COUPLING (IF NEEDED)
12	STIFFENERS MUST BE USED ON EACH END OF DR9 CTS HDPE (BLUE)
13	APPROVED TRACE WIRE
14	#36 MONITOR RING
15	FLANGE ADAPTER RING
16	BYPASS LINE
17	BYPASS VALVE—CLOSED & LOCKED OPERATED BY WATERONE ONLY.
18	SMARTPOINT INSTALLED BY WATERONE.



NOTES:

- A. EXCAVATIONS SHALL BE IN ACCORDANCE WITH OSHA REGULATION (STANDARD - 29 CFR) SUBPART 1926.650 THROUGH 1926.652 AND APPENDICES A THROUGH F.
- B. THIS METER PIT IS NOT TO BE LOCATED IN AREA SUBJECT TO VEHICULAR OR PEDESTRIAN TRAFFIC, OR IN CONCRETE PAVEMENT.
- C. IF METER IS NOT LOCATED IN RIGHT OF WAY, APPROVAL MUST BE OBTAINED FROM WATERONE.
- D. IF METER SIZE VARIES FROM THE TAP SIZE, WATERONE WILL PROVIDE ADAPTERS.
- E. WATERONE TO FURNISH ITEMS 2, 3, 5, 6, 7, 8, 9, 14, 15, 16 & 18
- F. ALL EXCAVATION AND INSTALLATION TO BE COMPLETED BY CONTRACTOR.
- G. UNDER NO CIRCUMSTANCE SHALL ANY OTHER EQUIPMENT OF ANY DESCRIPTION BE INSTALLED IN THIS PIT.
- H. SETTER SHALL BE CENTERED IN PIT.
- I. DO NOT COVER COUPLINGS IN PIT.
- J. SEE SERVICE APPLICATION BOOKLET FOR DEFINITIONS, RESPONSIBILITY OF APPLICANT AND GENERAL SPECIFICATIONS.
- K. ALL REQUIREMENTS AND SPECIFICATIONS ARE SUBJECT TO CHANGE WITHOUT NOTIFICATION.
- L. NO RE-SETTERS WILL BE ALLOWED.

MANAGER OF DISTRIBUTION ENGINEERING	DATE:
INITIALS:	
MANAGER OF DISTRIBUTION WATER QUALITY AND NEW SERVICE	DATE:
INITIALS:	
MANAGER OF CONSTRUCTION MAINTENANCE VALVING & SERVICE	DATE:
INITIALS:	
DIRECTOR OF DISTRIBUTION	DATE:
INITIALS:	

WaterOne
Water District No. 1 of Johnson County

**1 1/2" & 2" SERVICE CONNECTION
STANDARD INSTALLATION**

DRAWN BY: WRY/CAHM
DATE: 05-20-2009/4
DATE UPDATED: 01-20-2021

DWG NO.
ES-1825 (1.5, 2)