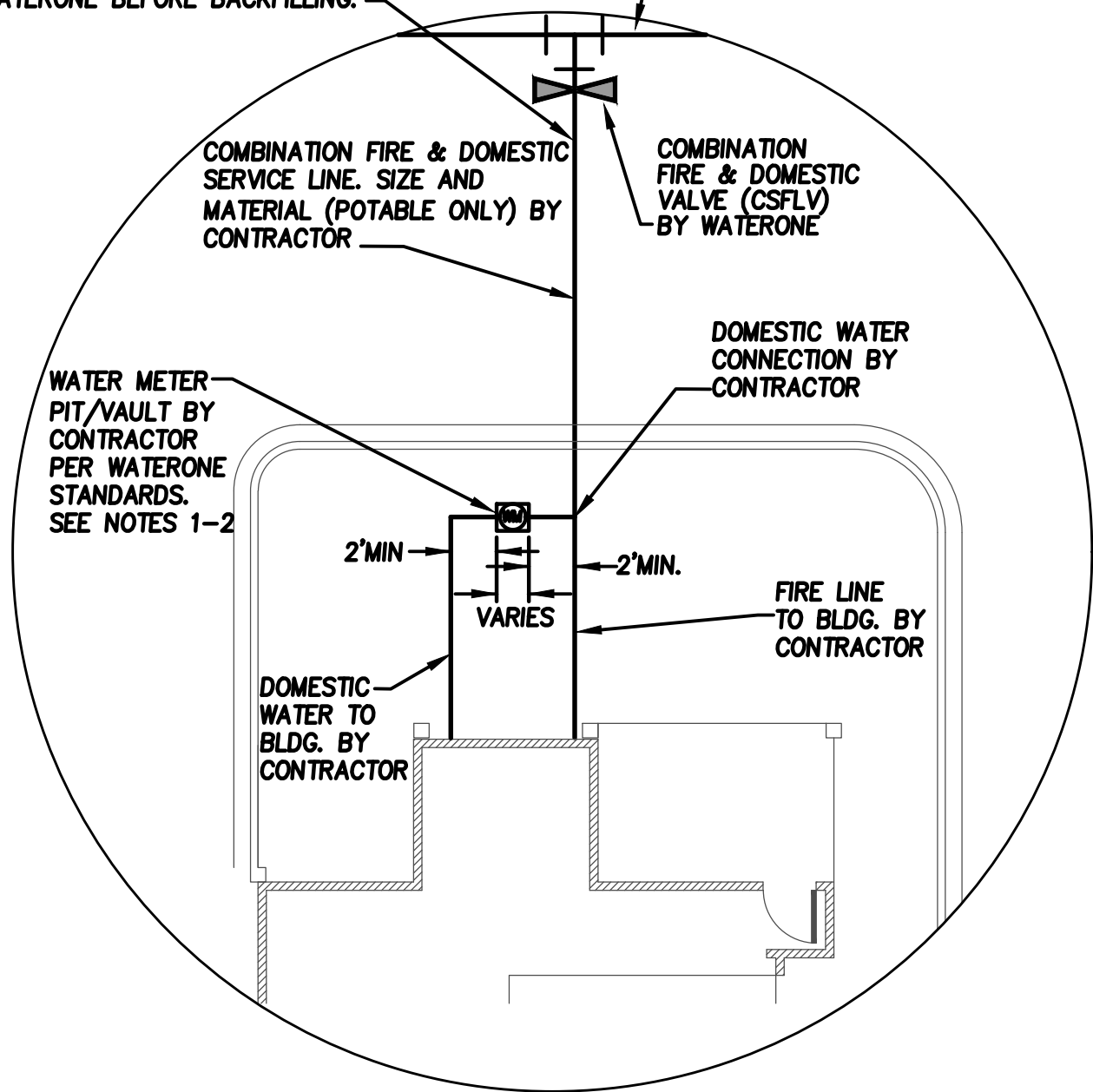


CONNECTION TO CSFLV BY CONTRACTOR SHALL BE INSPECTED & APPROVED BY WATERONE BEFORE BACKFILLING.



NO SCALE

NOTES:

1. WATER METER PIT/VAULT SHALL BE PLACED A MINIMUM OF 3' BOC ON PRIVATE PROPERTY AS CLOSE TO THE R/W LINE AS POSSIBLE.
2. WATER METER PITS/VAULTS SHALL HAVE 2' CLEARANCE IN ALL DIRECTIONS.

H:\WATERONE\INDUSTRIAL\ENGINEERING STANDARDS\COMPONENT DRAWINGS\ES-1815 (COMBINATION FIRE AND SERVICE LINE VALVE).dwg

MANAGER OF DISTRIBUTION ENGINEERING	
INITIALS:	DATE:
MANAGER OF DISTRIBUTION WATER QUALITY	
INITIALS:	DATE:
MANAGER OF CONSTRUCTION MAINTENANCE VALVING & SERVICE	
INITIALS:	DATE:
DIRECTOR OF DISTRIBUTION	
INITIALS:	DATE:

WaterOne
Water District No.1 of Johnson County

COMBINATION DOMESTIC & FIRE SERVICE CONNECTION

DRAWN BY: WRY
DATE: 03-27-13
REVISED BY: CHH
DATE: 09-24-2018

DWG NO.

ES-1815